

# FUTURE-PROOF YOUR **Food Safety Temperature Monitoring System**



# AUTOMATE HACCP COMPLIANCE

## Food Safety Temperature Monitoring System

Meet HACCP, FSMA, FDA, and CDC requirements and never fail an inspection. SensoScientific's wireless sensors monitor HACCP and cold storage temperatures and send data to the cloud for immediate use. Monitor wireless temperature sensors, make corrective actions, generate reports, and automate meeting food safety requirements from the SensoScientific Cloud, accessible through any internet-ready device.



### NEVER FAIL AN INSPECTION

Use your smartphone or tablet to monitor HACCP temperatures and tick all the boxes needed to surpass an inspection.



### DOCUMENT TASK COMPLETION

Create custom menus and checklists and see when staff take improper temperature readings or perform critical tasks.



### MAINTAIN 5-STAR RATINGS

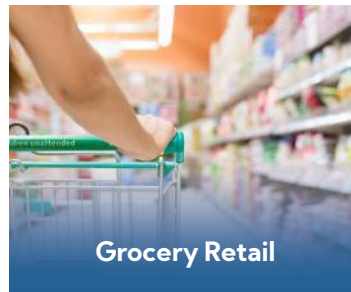
Know the moment potential food-borne illnesses arise with real-time pass/fail detection and immediate alert notifications.



HACCP Temperature



Hospital Dietary



Grocery Retail



Restaurants



K-12 Schools



Universities



Manufacturing & Storage



Transport & Delivery

# COMPLIANCE AUTOMATION EXPERTS

Let us worry about meeting your compliance standards. SensoScientific provides a comprehensive solution to meeting regulatory requirements, no matter how strict.

## ELIMINATE MANUAL DATA LOGGING

No need to use pen and paper to document temperature readings. Devices centralize all data records through the SensoScientific Cloud, so you never miss a reading.

## CUSTOMIZABLE MENUS AND CHECKLISTS

Through the Senso HACCP app, you can create custom menus and checklists. This allows you to see when staff take improper food temperatures and perform tasks, like cleaning restrooms.

## IMMEDIATE ALERT NOTIFICATIONS

Receive notifications the moment temperatures fall outside the desirable range. Twenty-four hours a day, seven days a week, alert notifications are sent via email, phone, text, SMS, pager, fax, and more!

## COMPREHENSIVE REPORTING

Through the Senso HACCP app and SensoScientific Cloud, you can generate HACCP reports to meet compliance with ease. No need for bulk data downloads or downtime to receive data.



## COMPLIES WITH

- ✓ HACCP (Hazard Analysis Critical Control Point)
- ✓ FDA (Food and Drug Administration)
- ✓ FSMA (FDA Food Safety Modernization Act)
- ✓ CDC (Center for Disease Control and Prevention)
- ✓ A2LA (American Association for Laboratory Accreditation)
- ✓ FDA 21 CFR Part 11 (ERES)
- ✓ ISO/IEC 17025
- ✓ NIST (National Institute of Standards and Technology)
- ✓ ISO/IEC 9001
- ✓ IQ OQ PQ Validation
- ✓ cGMP (Current Good Manufacturing Practice)
- ✓ GDP (Good Distribution Practices)
- ✓ GAMP (Good Automated Manufacturing Practices)
- ✓ WHO (World Health Organization)
- ✓ FFDCA (Federal Food, Drug, and Cosmetic Act)
- ✓ EPA (Environmental Protection Agency)
- ✓ NFSS (National Food Safety System)
- + And More!

# COLD STORAGE TEMPERATURE MONITORING

Stop throwing away spoiled inventory and delegating staff to take manual temperature readings. SensoScientific's wireless sensors automate cold storage food safety monitoring by taking temperature measurements and using Wi-Fi to upload data to the SensoScientific Cloud. The cloud sends notifications the moment temperatures fall outside the desirable range so the team can take immediate action.



## REMOTE, AUTOMATIC UPDATES

Devices update automatically via Wi-Fi connection.



## EXPAND PRODUCT LIFE SPAN

Device software is kept up-to-date even after purchase.



## NO PERFORMANCE DISRUPTIONS

Sensors remain fully functioning & interactive during updates.



## SCALABLE AND COST-EFFICIENT

OTA firmware upgrades fleets of sensors with no downtime.



## 100% SECURE

Microsoft® Azure cloud updates are fully encrypted.

## HOW IT WORKS

Nodes piggyback off your existing Wi-Fi to upload data to the SensoScientific Cloud and send you real-time alerts & notifications. No need for costly external servers, tedious software installations, or extensive maintenance.





# HACCP FOOD SAFETY TEMPERATURE MONITORING

From cold storage nodes to handheld wireless temperature probes, SensoScientific's food safety temperature monitoring system centralizes data records for complete visibility through the SensoScientific Cloud. The Wireless Probe matched with the Senso HACCP app connects to any iOS or Android™ device. Simply insert and record to meet HACCP, FDA, FSMA, CFR 21 Part 11, CDC, and other regulatory guidelines.



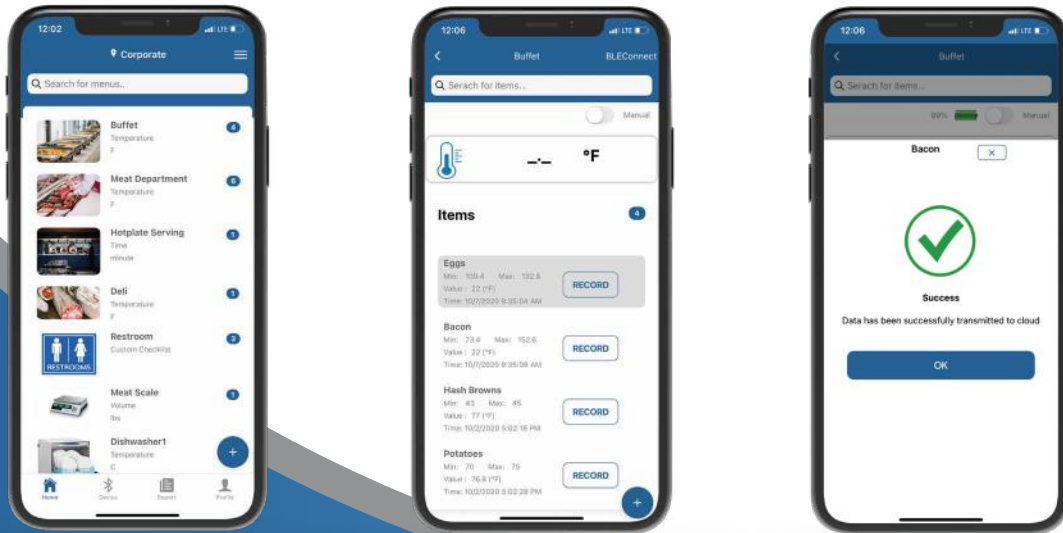
## KEY FEATURES

- ✓ Wireless Technology Compatible with Smart Phones
- ✓ Accuracy to  $\pm 0.7^{\circ}\text{F}$
- ✓ Includes NIST Traceable Calibration Certificates
- ✓ 2-3 Second Readings
- ✓ Waterproof to IP67
- ✓ Up to 1,000-Hours Battery Life, 1 x AAA
- ✓ Integrated into the Senso HACCP App
- ✓ Compatible with iOS and Android™
- ✓ 4.3-Inch Fold-Away Probe
- ✓ Create & Monitor Checklists from Any Mobile Device
- ✓ Document Temperatures & Make Corrective Actions
- ✓ Push-Button Simplicity
- ✓ Equipped with Water Resistant Silicone Boot



# SENSO HACCP App

## Never Fail an Inspection



The Senso HACCP app is designed to automate the task of meeting food safety temperature monitoring requirements.

Create custom menus tailored to your facility's cuisine. Build customizable checklists to document when workers perform tasks, like cleaning restrooms. View real-time pass/fail temperature measurements and make immediate corrective actions.

This intuitive application makes it easy to meet HACCP, CDC, and FDA food safety regulatory requirements.

### APP FEATURES:

- ✓ Immediate Pass/Fail Detection
- ✓ Customizable Menus & Checklists
- ✓ Immediate Temperature Recording & Documentation
- ✓ Reheat/Re-chill Reminders for Failed Readings
- ✓ Easy and Intuitive Interface
- ✓ iOS and Android™ Compatible



# A2LA ACCREDITED CALIBRATION



## A2LA ACCREDITED & NIST TRACEABLE

SensoScientific's A2LA Accredited Calibration Lab provides NIST traceable probes and uploads calibration certificates to the SensoScientific Validated Cloud for immediate use. Through the SensoScientific Validated Cloud, you can view, print, and download your current and archived certificates - they are always accessible!

## SNAP CALIBRATION

SensoScientific's SNAP Calibration program is a convenient and cost-efficient solution to meeting regulatory compliance. SensoScientific automates calibration requirements by sending newly calibrated, NIST traceable, and A2LA Accredited probes and devices in the mail, then uploading your calibration certificates to the SensoScientific Validated Cloud.

## SENSOCAL ON-SITE CALIBRATION

SensoScientific's On-site Calibration Service is the next level of personalized calibration. With this service, our ISO/IEC 17025 certified Calibration Technicians go straight to your doorstep to recalibrate probes, perform device diagnostics, and prepare on-the-spot A2LA Accredited and NIST traceable calibration certificates for immediate use.



# SENSOSCIENTIFIC VALIDATED CLOUD

## FDA 21 CFR Part 11 Compliant

In partnership with the Microsoft® Azure cloud platform, SensoScientific utilizes government-grade security to provide unparalleled reliability. SensoScientific Validated Cloud services include LDAP Single Sign-on and Fail-over Disaster Recovery at client's request.

- ✓ LDAP Single Sign-on
- ✓ Fail-over Disaster Recovery

### IMMEDIATE ALERT NOTIFICATIONS

Through the SensoScientific Validated Cloud, you can customize alert notification preferences to receive real-time, immediate notifications as soon as readings fall outside the desirable range. For sensitive materials, this can prevent thousands of dollars in inventory loss.

- Email
- Voice
- Text
- SMS
- Fax
- Pager

### COMPREHENSIVE REPORTING

Say goodbye to bulk data downloads and downtime to receive documented data. The SensoScientific Cloud has every report option you need to meet compliance, available for immediate use.

- Monthly, Weekly, & Daily Reports
- Two-Point & Monthly Compliance Reports
- Automatic Reports Sent via Email
- Alert, Root Cause, & Corrective Action History



# MORE THAN TEMPERATURE

## An Enterprise-Wide Solution

SensoScientific is an enterprise-wide solution equipped with a wide range of sensors to meet all your environmental monitoring needs. Nodes are Wi-Fi compatible, designed to piggyback off your existing Wi-Fi network. Nodes measure data locally then upload readings to the SensoScientific Validated Cloud for comprehensive visibility and report generation. Customizable alerts & notifications sent 24/7 let you know the moment data goes out of range.



**TEMPERATURE**

**HUMIDITY**

**DIFFERENTIAL PRESSURE**

**LIGHT**

**DRY CONTACT – OPEN/CLOSE**

**UNIVERSAL**

**+ MORE**

### Key Features:

- ✓ Wi-Fi Compatible
- ✓ On-board E-ink Display
- ✓ Current & Min/Max Readings
- ✓ Real-Time Alerts Notifications
- ✓ A2LA Accredited & NIST Traceable Calibration Certificates
- ✓ Push Button for Real-Time Readings
- ✓ Audio and Visual Alerts on Device
- ✓ No Propriety Software
- ✓ Buffered Data up to 4000 Readings
- ✓ Dual Power - Battery/AC Power
- ✓ IN-HOUSE ISO/IEC 17025 Certified Calibration Lab
- ✓ Multi-Led for Connectivity Status
- ✓ Lowest Total Cost of Ownership
- ✓ FDA 21 CFR Part 11 Compliant

# EXPERT TECHNICAL SUPPORT

## No Matter Where You Are

SensoScientific provides the highest level of support to our partners around the world throughout every stage of your experience with us.

- ✓ 24/7 Support
- ✓ Interactive Ticket Submission
- ✓ Online Training Videos
- ✓ Weekly Webinars
- ✓ User Guides & Documents
- ✓ On-site Installation & Training
- ✓ Convenient SNAP Calibration
- ✓ Carefree+ Membership Exclusives



[salesinfo@sensoscientific.com](mailto:salesinfo@sensoscientific.com)

(800) 279-3101

## IoT Solutions & Compliance Automation Experts

Since 2005, SensoScientific has been at the forefront of Internet of Things (IoT) technology and innovative environmental monitoring. We focus on providing superior products, services, and calibration to meet regulatory standards and improve operational efficiencies to meet compliance.

As the preferred environmental monitoring system for prominent healthcare facilities, laboratories, pharmacies, IDNs, GPOs, universities, and restaurants across the U.S., our fully automated monitoring system meets even the strictest of regulatory requirements. Our ISO/IEC 17025 certified and A2LA Accredited Calibration Lab provides NIST traceable probes and automatically upload Calibration Certificates to the SensoScientific Cloud for immediate use.

Our headquarters are in Simi Valley, CA but our products can be found around the world.



**SensoScientific**®

[www.sensoscientific.com](http://www.sensoscientific.com)